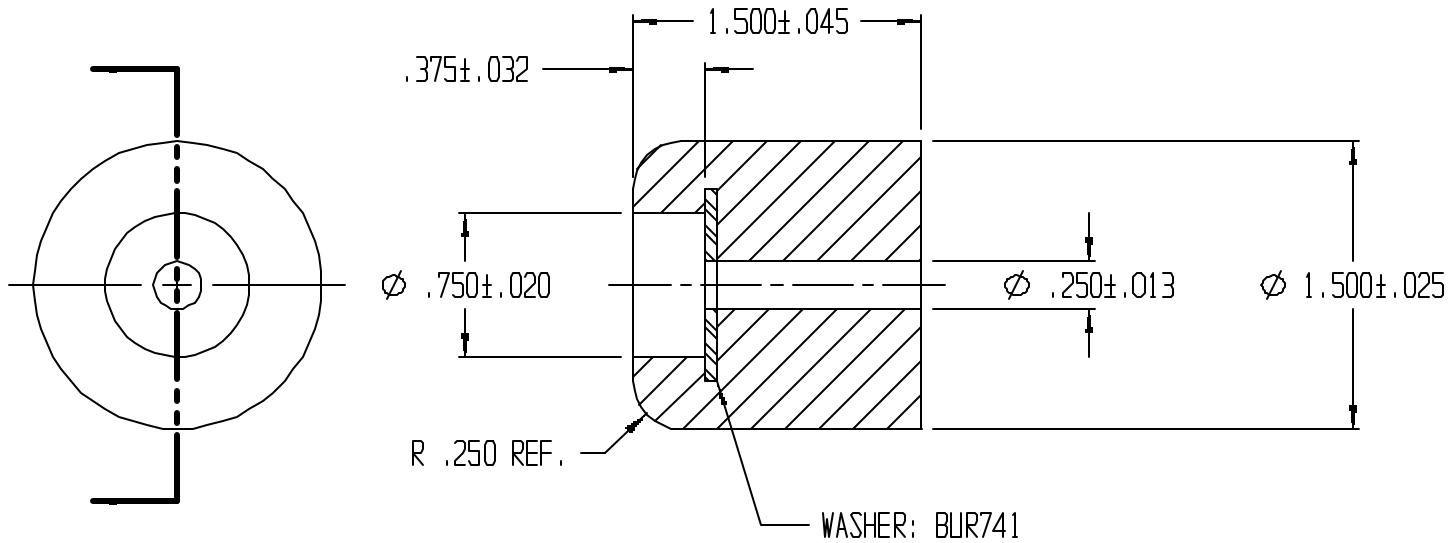


REVISIONS					
REV.	ZONE	BY	DESCRIPTION	DATE	APPROVED
2		MAD	REDRAWN TO CADKEY	12/3/98	



UNLESS OTHERWISE SPECIFIED  
DIMENSIONS ARE IN INCHES  
TOLERANCES ARE  
DECIMALS .MM ANGULAR



LAVELLE IND., INC.  
665 McHENRY St. BURLINGTON, WISC. 53105  
Ph. 414/763-2434 Fax 414/763-5807

TITLE RECESS BUMPER

MATERIAL F57006

SHEET 1 OF 1

DRAWN M A DEAN DATE 3/22/96

CHECK DATE

DESIGN DATE

SIZE A SCALE 1X PART NO. 795RW REV. 2

FILE PATH g:\cadkey\parts\stock\recssbpr\795RW.prt