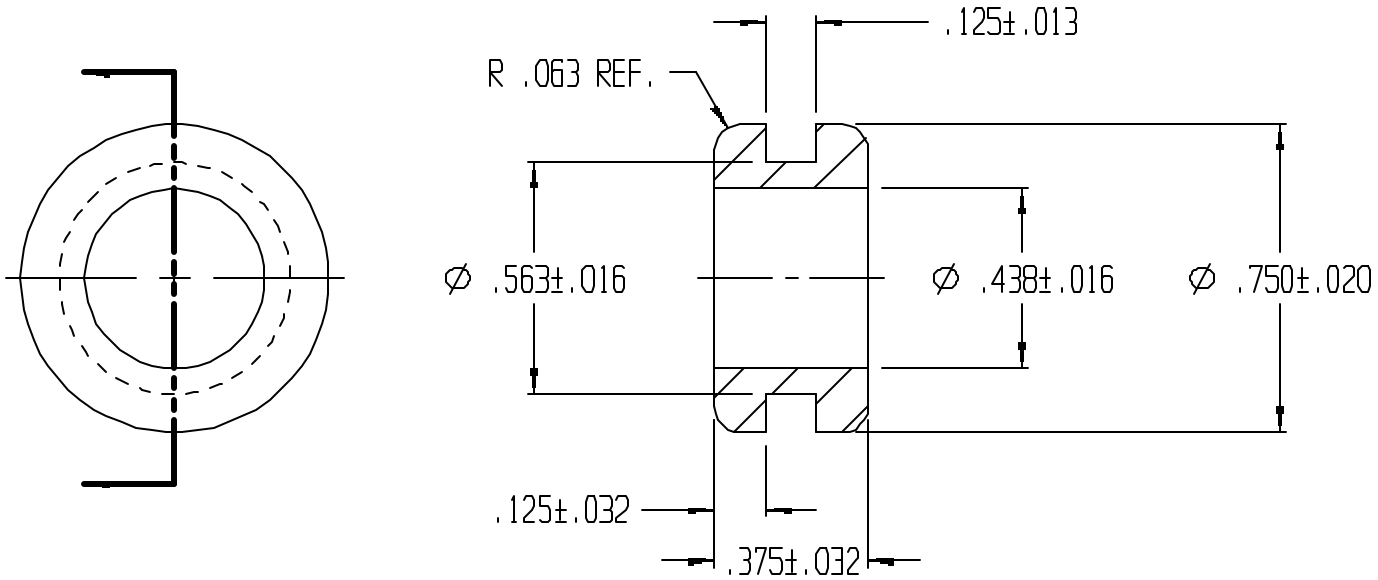


REVISIONS					
REV.	ZONE	BY	DESCRIPTION	DATE	APPROVED
2		MAD	REDRAWN TO CADKEY	11/20/97	



UNLESS OTHERWISE SPECIFIED DIMENSIONS ARE IN INCHES		LAVELLE		LAVELLE IND., INC.	
TOLERANCES ARE DECIMALS      MM      ANGULAR		665 McHENRY St.		BURLINGTON, WISC. 53105	
		Ph. 414/763-2434		Fax 414/763-5607	
TITLE GROMMET					
MATERIAL F55004				SHEET 1	OF 1
DRAWN M A DEAN	DATE 1/17/97	SIZE A	SCALE 2X	PART NO. 918	REV. 2
CHECK	DATE	FILE g:\cadkey\parts\stock\grommets\91B.prt			
DESIGN	DATE				